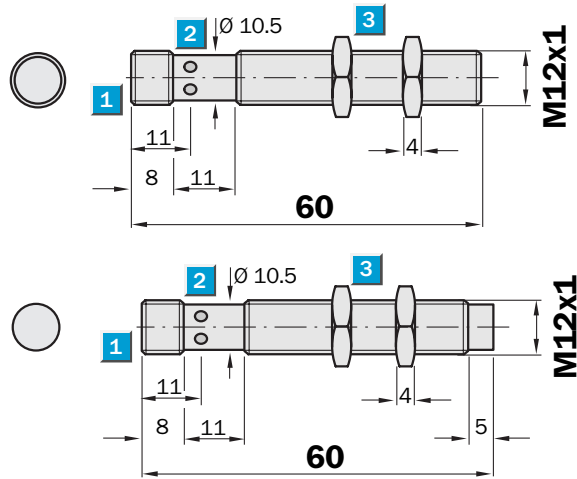


Sensing range
6 / 10 mm

Inductive sensor

- Triple sensing range
- Robust stainless steel V4A, 316L one piece housing, with fine thread M12 x 1 mm
- Enclosure rating IP 69K + IP 68
- Especially suitable for use in the food and beverage sector
- Visual installation support

Dimensional drawing



- 1 Connection
- 2 Display LED
- 3 Fastening nuts (2 x); width across 17, stainless steel V4A, 316L



Connection type

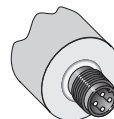
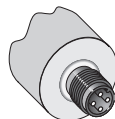
IM12-06BPO-NC1

IM12-06BNS-NC1

IM12-06BPS-NC1

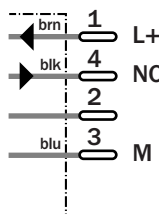
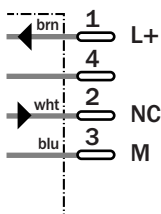
IM12-10NNS-NC1

IM12-10NPS-NC1



M12, 4-pin

M12, 4-pin



See chapter Accessories

Connector, M12, 4-pin

Mounting systems

Technical specifications		IM12-	06BNS-NC1	06BPO-NC1	06BPS-NC1	10NNS-NC1	10NPS-NC1					
Sensing range S_n	6 mm											
	10 mm											
Electrical configuration	DC 3-wire											
Supply voltage V_s	DC 10 ... 30 V											
Ripple U _{pp}	≤ 20 % ¹⁾											
Voltage drop U _d	≤ 2 V ²⁾											
Power consumption	≤ 12 mA ³⁾											
Continuous current I_a	≤ 200 mA											
Time delay before availability t _v	≤ 300 ms											
Hysteresis H, of s _r	1 ... 15 %											
Repeatability R	≤ 5 % (U _b and T _a constant) ⁴⁾											
Temperature drift, of s _r	≤ 10 %											
EMC	According to EN 60947-5-2											
Switching output	NPN											
	PNP											
Output function	Normally open ⁵⁾											
	Normally closed ⁵⁾											
Installation	Flush											
	Non-flush ⁶⁾											
Connection type	Connector, M12, 4-pin											
Enclosure rating	IP68, IP 69K ⁷⁾											
Max. switching frequency	400 Hz											
Dimensions	M12 x 1 ⁸⁾											
Short-circuit protection	✓ ⁹⁾											
Reverse polarity protection	✓											
Power-up pulse suppression	✓											
Shock/vibration stress	30 g, 11 ms/10 ... 55 Hz, 1 mm ¹⁰⁾											
Ambient temperature T _a	-25 °C ... +85 °C											
Housing material	Stainless steel V4A 1.4404, 316L											
Tightening torque	10 Nm											

¹⁾ of U_b
²⁾ at I_a max
³⁾ without load

⁴⁾ of s_r
⁵⁾ other output functions available on request.

⁶⁾ see installation notes
⁷⁾ according to EN 60529
⁸⁾ Thread diameter x pitch (mm)

⁹⁾ (pulsed)
¹⁰⁾ according to IEC 60 947-5-2/7.4

Correction factors:

	Flush installation:	Non-flush installation:
Steel (ST37)	1.0	1.0
Copper	0.85	0.8
Aluminium	1.0	1.0
Brass	1.3	1.3
Stainless steel	0.45 / 0.9	0.5 / 0.9

1 mm / 2 mm thick

Order information

Type	Order no.
IM12-06BNS-NC1	6 027 573
IM12-06BPO-NC1	6 027 574
IM12-06BPS-NC1	6 027 572
IM12-10NNS-NC1	6 027 576
IM12-10NPS-NC1	6 027 575