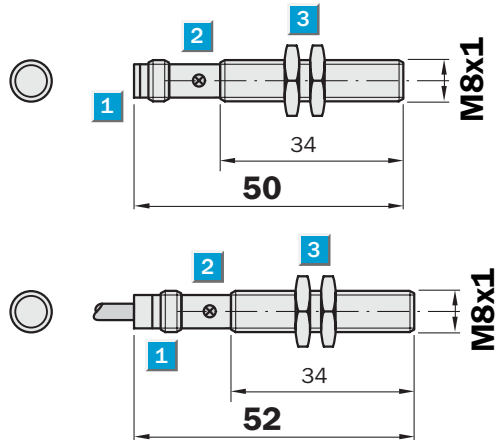


Sensing range
1.5 mm

Inductive sensor

- Short-circuit protection (pulsed)
- Robust brass housing, nickel-plated with fine thread M8 x 1 mm
- Enclosure rating IP 67
- Installation flush

Dimensional drawing

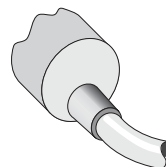
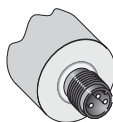


- 1 Connection
- 2 Display LED
- 3 Fastening nuts (2 x); width across 13, metal



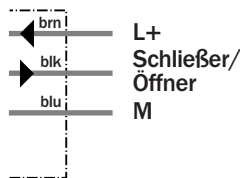
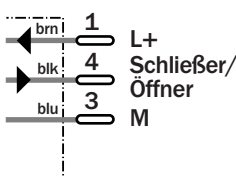
Connection type

IME08-1B5NOZTOS	IME08-1B5NOZW2S
IME08-1B5NSZTOS	IME08-1B5NSZW2S
IME08-1B5POZTOS	IME08-1B5POZW2S
IME08-1B5PSZTOS	IME08-1B5PSZW2S



M8, 3-pin

3 x 0.14 mm²



Accessories
Connector, M8, 3-pin

Technical specifications		IME08-	1B5NO ZT0S	1B5NO ZW2S	1B5NS ZT0S	1B5NS ZW2S	1B5PO ZT0S	1B5PO ZW2S	1B5PS ZT0S	1B5PS ZW2S		
Sensing range S_n	1.5 mm											
Electrical configuration	DC 3-wire											
Supply voltage V_s	DC 10 ... 30 V											
Ripple U_{pp}	≤ 10 %											
Voltage drop U_d	≤ 2 V ¹⁾											
Power consumption	≤ 10 mA ²⁾											
Continuous current I_a	≤ 200 mA											
Time delay before availability t_v	≤ 100 ms											
Hysteresis H, of s_r	5 ... 15 %											
Repeatability R	≤ 2 % (U_b and T_a constant) ³⁾											
Temperature drift, of s_r	± 10 %											
EMC	According to EN 60947-5-2											
Switching output	NPN											
	PNP											
Output function	Normally closed											
	Normally open											
Installation	Flush											
Connection type	Connector, M8, 3-pin											
	Cable, PVC, 2 m											
Enclosure rating	IP 67 ⁴⁾											
Max. switching frequency	500 Hz											
Dimensions	M8 x 1 ⁵⁾											
Short-circuit protection	✓ ⁶⁾											
Reverse polarity protection	✓											
Power-up pulse suppression	✓											
Shock/vibration stress	30 g, 11 ms/10 ... 55 Hz, 1 mm											
Ambient temperature T_a	-20 °C ... +65 °C											
Housing material	Brass nickel-plated, plastic											
Tightening torque	6 Nm											

¹⁾ at I_a max
²⁾ without load

³⁾ of s_r
⁴⁾ according to EN 60529

⁵⁾ Thread diameter x pitch (mm)
⁶⁾ (pulsed)

Reduction factor R_M

The following are reference values, which may vary from type to type:

St37 (Fe)	1
Stainless steel (V2A)	Approx. 0.8
Aluminum (solid)	Approx. 0.45
Copper (Cu)	Approx. 0.4

Ordering information

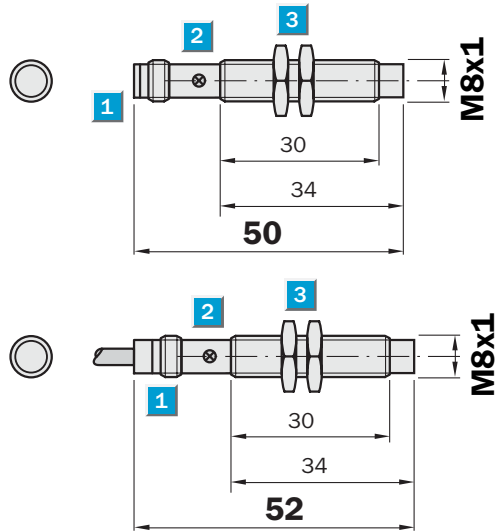
Type	Part Number
IME08-1B5NOZT0S	1 040 850
IME08-1B5NOZW2S	1 040 852
IME08-1B5NSZT0S	1 040 846
IME08-1B5NSZW2S	1 040 848
IME08-1B5POZT0S	1 040 842
IME08-1B5POZW2S	1 040 844
IME08-1B5PSZT0S	1 040 838
IME08-1B5PSZW2S	1 040 840

Sensing range
2.5 mm

Inductive sensor

- Short-circuit protection (pulsed)
- Robust brass housing, nickel-plated with fine thread M8 x 1 mm
- Enclosure rating IP 67
- Installation non-flush

Dimensional drawing

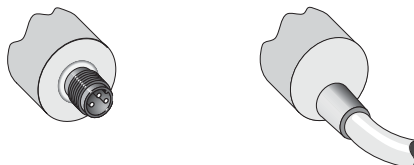


- 1 Connection
- 2 Display LED
- 3 Fastening nuts (2 x); width across 13, metal



Connection type

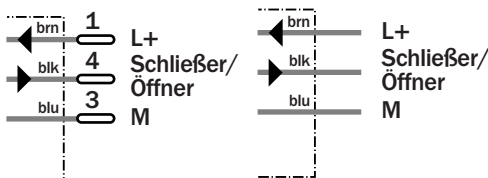
IME08-2N5NOZT0S	IME08-2N5NOZW2S
IME08-2N5NSZT0S	IME08-2N5NSZW2S
IME08-2N5POZT0S	IME08-2N5POZW2S
IME08-2N5PSZT0S	IME08-2N5PSZW2S



Accessories
Connector, M8, 3-pin

M8, 3-pin

3 x 0.14 mm²



Technical specifications		IME08-	2N5N OZT0S	2N5NO ZW2S	2N5NS ZT0S	2N5NS ZW2S	2N5PO ZT0S	2N5PO ZW2S	2N5PS ZT0S	2N5PS ZW2S		
Sensing range S_n	2.5 mm											
Electrical configuration	DC 3-wire											
Supply voltage V_s	DC 10 ... 30 V											
Ripple U_{pp}	≤ 10 %											
Voltage drop U_d	≤ 2 V ¹⁾											
Power consumption	≤ 10 mA ²⁾											
Continuous current I_a	≤ 200 mA											
Time delay before availability t_v	≤ 100 ms											
Hysteresis H, of s_r	5 ... 15 %											
Repeatability R	≤ 2 % (U_b and T_a constant) ³⁾											
Temperature drift, of s_r	± 10 %											
EMC	According to EN 60947-5-2											
Switching output	NPN											
	PNP											
Output function	Normally closed											
	Normally open											
Installation	Non-flush											
Connection type	Connector, M8, 3-pin											
	Cable, PVC, 2 m											
Enclosure rating	IP 67 ⁴⁾											
Max. switching frequency	500 Hz											
Dimensions	M8 x 1 ⁵⁾											
Short-circuit protection	✓ ⁶⁾											
Reverse polarity protection	✓											
Power-up pulse suppression	✓											
Shock/vibration stress	30 g, 11 ms/10 ... 55 Hz, 1 mm											
Ambient temperature T_a	-20 °C ... +65 °C											
Housing material	Brass nickel-plated, plastic											
Tightening torque	6 Nm											

¹⁾ at I_a max
²⁾ without load

³⁾ of s_r
⁴⁾ according to EN 60529

⁵⁾ Thread diameter x pitch (mm)
⁶⁾ (pulsed)

Reduction factor R_M

The following are reference values, which may vary from type to type:

St37 (Fe)	1
Stainless steel (V2A)	Approx. 0.8
Aluminum (solid)	Approx. 0.45
Copper (Cu)	Approx. 0.4

Ordering information

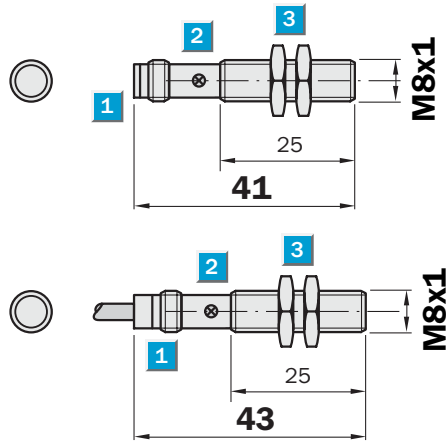
Type	Part Number
IME08-2N5NOZT0S	1 040 866
IME08-2N5NOZW2S	1 040 868
IME08-2N5NSZT0S	1 040 862
IME08-2N5NSZW2S	1 040 864
IME08-2N5POZT0S	1 040 858
IME08-2N5POZW2S	1 040 860
IME08-2N5PSZT0S	1 040 854
IME08-2N5PSZW2S	1 040 856

Sensing range
1.5 mm

Inductive sensor

- Short-circuit protection (pulsed)
- Robust brass housing, nickel-plated with fine thread M8 x 1 mm
- Enclosure rating IP 67
- Installation flush

Dimensional drawing

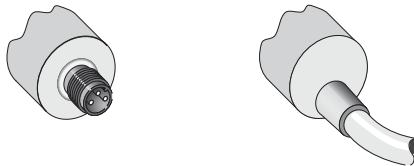


- 1 Connection
- 2 Display LED
- 3 Fastening nuts (2 x); width across 13, metal



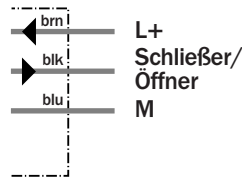
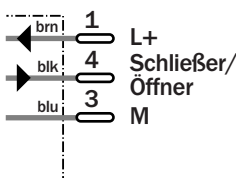
Connection type

IME08-1B5NOZTOK	IME08-1B5NOZW2K
IME08-1B5NSZTOK	IME08-1B5NSZW2K
IME08-1B5POZTOK	IME08-1B5POZW2K
IME08-1B5PSZTOK	IME08-1B5PSZW2K



M8, 3-pin

3 x 0.14 mm²



Accessories
Connector, M8, 3-pin

Technical specifications		IME08-	1B5NO ZTOK	1B5NO ZW2K	1B5NS ZTOK	1B5NS ZW2K	1B5PO ZTOK	1B5PO ZW2K	1B5PS ZTOK	1B5PS ZW2K		
Sensing range S_n	1.5 mm											
Electrical configuration	DC 3-wire											
Supply voltage V_s	DC 10 ... 30 V											
Ripple U_{pp}	$\leq 10 \%$											
Voltage drop U_d	$\leq 2 V^{1)}$											
Power consumption	$\leq 10 mA^{2)}$											
Continuous current I_a	$\leq 200 mA$											
Time delay before availability t_v	$\leq 100 ms$											
Hysteresis H, of s_r	5 ... 15 %											
Repeatability R	$\leq 2 \%$ (U_b and T_a constant) ³⁾											
Temperature drift, of s_r	$\pm 10 \%$											
EMC	According to EN 60947-5-2											
Switching output	NPN											
	PNP											
Output function	Normally closed											
	Normally open											
Installation	Flush											
Connection type	Connector, M8, 3-pin											
	Cable, PVC, 2 m											
Enclosure rating	IP 67 ⁴⁾											
Max. switching frequency	500 Hz											
Dimensions	M8 x 1 ⁵⁾											
Short-circuit protection	✓ ⁶⁾											
Reverse polarity protection	✓											
Power-up pulse suppression	✓											
Shock/vibration stress	30 g, 11 ms/10 ... 55 Hz, 1 mm											
Ambient temperature T_a	-20 °C ... +65 °C											
Housing material	Brass nickel-plated, plastic											
Tightening torque	6 Nm											

¹⁾ at I_a max
²⁾ without load

³⁾ of s_r
⁴⁾ according to EN 60529

⁵⁾ Thread diameter x pitch (mm)
⁶⁾ (pulsed)

Reduction factor R_M

The following are reference values, which may vary from type to type:

St37 (Fe)	1
Stainless steel (V2A)	Approx. 0.8
Aluminum (solid)	Approx. 0.45
Copper (Cu)	Approx. 0.4

Ordering information

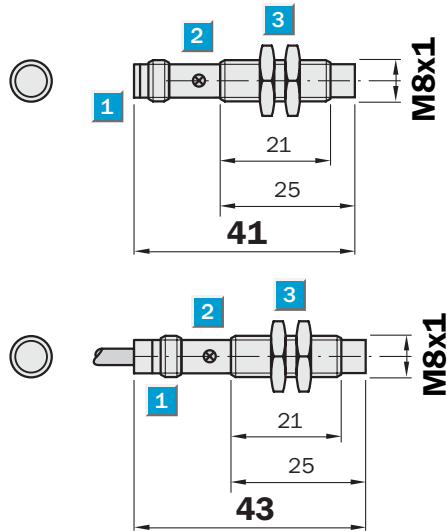
Type	Part Number
IME08-1B5NOZTOK	1 040 849
IME08-1B5NOZW2K	1 040 851
IME08-1B5NSZTOK	1 040 845
IME08-1B5NSZW2K	1 040 847
IME08-1B5POZTOK	1 040 841
IME08-1B5POZW2K	1 040 843
IME08-1B5PSZTOK	1 040 837
IME08-1B5PSZW2K	1 040 839

Sensing range
2.5 mm

Inductive sensor

- Short-circuit protection (pulsed)
- Robust brass housing, nickel-plated with fine thread M8 x 1 mm
- Enclosure rating IP 67
- Installation non-flush

Dimensional drawing

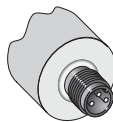


- 1 Connection
- 2 Display LED
- 3 Fastening nuts (2 x); width across 13, metal

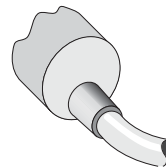


Connection type

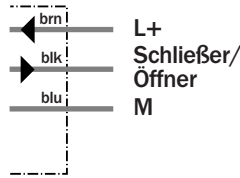
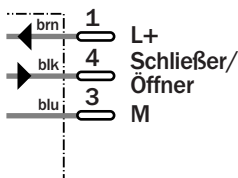
IME08-2N5NOZTOK	IME08-2N5NOZW2K
IME08-2N5NSZTOK	IME08-2N5NSZW2K
IME08-2N5POZTOK	IME08-2N5POZW2K
IME08-2N5PSZTOK	IME08-2N5PSZW2K



M8, 3-pin



3 x 0.14 mm²



Accessories
Connector, M8, 3-pin

Technical specifications		IME08-	2N5N OZT0K	2N5NO ZW2K	2N5NS ZT0K	2N5NS ZW2K	2N5PO ZT0K	2N5PO ZW2K	2N5PS ZT0K	2N5PS ZW2K		
Sensing range S_n	2.5 mm											
Electrical configuration	DC 3-wire											
Supply voltage V_s	DC 10 ... 30 V											
Ripple U _{pp}	≤ 10 %											
Voltage drop U _d	≤ 2 V ¹⁾											
Power consumption	≤ 10 mA ²⁾											
Continuous current I_a	≤ 200 mA											
Time delay before availability t _v	≤ 100 ms											
Hysteresis H, of s _r	5 ... 15 %											
Repeatability R	≤ 2 % (U _b and T _a constant) ³⁾											
Temperature drift, of s _r	± 10 %											
EMC	According to EN 60947-5-2											
Switching output	NPN											
	PNP											
Output function	Normally closed											
	Normally open											
Installation	Non-flush											
Connection type	Connector, M8, 3-pin											
	Cable, PVC, 2 m											
Enclosure rating	IP 67 ⁴⁾											
Max. switching frequency	500 Hz											
Dimensions	M8 x 1 ⁵⁾											
Short-circuit protection	✓ ⁶⁾											
Reverse polarity protection	✓											
Power-up pulse suppression	✓											
Shock/vibration stress	30 g, 11 ms/10 ... 55 Hz, 1 mm											
Ambient temperature T _a	-20 °C ... +65 °C											
Housing material	Brass nickel-plated, plastic											
Tightening torque	6 Nm											

¹⁾ at I_a max
²⁾ without load

³⁾ of s_r
⁴⁾ according to EN 60529

⁵⁾ Thread diameter x pitch (mm)
⁶⁾ (pulsed)

Reduction factor R_M

The following are reference values, which may vary from type to type:

St37 (Fe)	1
Stainless steel (V2A)	Approx. 0.8
Aluminum (solid)	Approx. 0.45
Copper (Cu)	Approx. 0.4

Ordering information

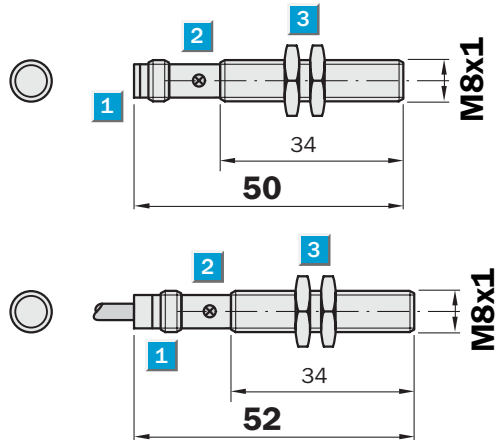
Type	Part Number
IME08-2N5NOZT0K	1 040 865
IME08-2N5NOZW2K	1 040 867
IME08-2N5NSZT0K	1 040 861
IME08-2N5NSZW2K	1 040 863
IME08-2N5POZT0K	1 040 857
IME08-2N5POZW2K	1 040 859
IME08-2N5PSZT0K	1 040 853
IME08-2N5PSZW2K	1 040 855

Sensing range
2 mm

Inductive sensor

- Short-circuit protection (pulsed)
- Robust brass housing, nickel-plated with fine thread M8 x 1 mm
- Enclosure rating IP 67
- Installation quasi-flush

Dimensional drawing

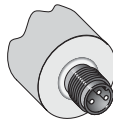


- 1 Connection
- 2 Display LED
- 3 Fastening nuts (2 x); width across 13, metal

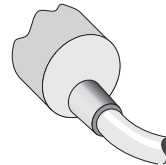


Connection type

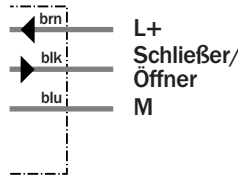
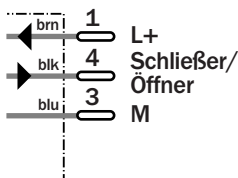
IME08-02BNOZTOS	IME08-02BNOZW2S
IME08-02BNSZTOS	IME08-02BNSZW2S
IME08-02BPOZTOS	IME08-02BPOZW2S
IME08-02BPSZTOS	IME08-02BPSZW2S



M8, 3-pin



3 x 0.14 mm²



Accessories
Connector, M8, 3-pin

Technical specifications		IME08-	02BNO ZT0S	02BNO ZW2S	02BNS ZT0S	02BNS ZW2S	02BPO ZT0S	02BPO ZW2S	02BPS ZT0S	02BPS ZW2S		
Sensing range S_n	2 mm											
Electrical configuration	DC 3-wire											
Supply voltage V_s	DC 10 ... 30 V											
Ripple U_{pp}	$\leq 10 \%$											
Voltage drop U_d	$\leq 2 V^{1)}$											
Power consumption	$\leq 10 mA^{2)}$											
Continuous current I_a	$\leq 200 mA$											
Time delay before availability t_v	$\leq 100 ms$											
Hysteresis H, of s_r	5 ... 15 %											
Repeatability R	$\leq 2 \%$ (U_b and T_a constant) ³⁾											
Temperature drift, of s_r	$\pm 10 \%$											
EMC	According to EN 60947-5-2											
Switching output	NPN											
	PNP											
Output function	Normally closed											
	Normally open											
Installation	Quasi-flush											
Connection type	Connector, M8, 3-pin											
	Cable, PVC, 2 m											
Enclosure rating	IP 67 ⁴⁾											
Max. switching frequency	500 Hz											
Dimensions	M8 x 1 ⁵⁾											
Short-circuit protection	✓ ⁶⁾											
Reverse polarity protection	✓											
Power-up pulse suppression	✓											
Shock/vibration stress	30 g, 11 ms/10 ... 55 Hz, 1 mm											
Ambient temperature T_a	-20 °C ... +65 °C											
Housing material	Brass nickel-plated, plastic											
Tightening torque	6 Nm											

¹⁾ at I_a max
²⁾ without load

³⁾ of s_r
⁴⁾ according to EN 60529

⁵⁾ Thread diameter x pitch (mm)
⁶⁾ (pulsed)

Reduction factor R_M

The following are reference values, which may vary from type to type:

St37 (Fe)	1
Stainless steel (V2A)	Approx. 0.8
Aluminum (solid)	Approx. 0.45
Copper (Cu)	Approx. 0.4

Ordering information

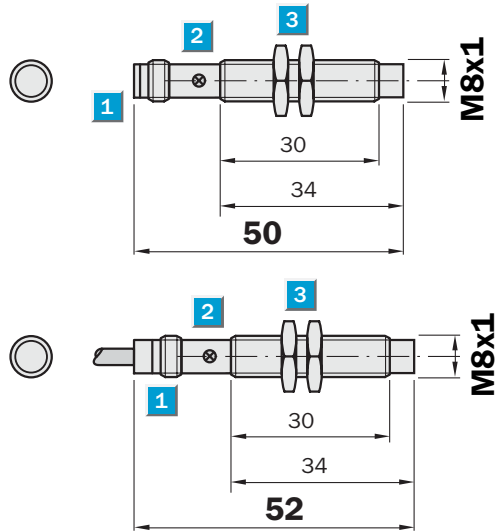
Type	Part Number
IME08-02BNOZT0S	1 040 882
IME08-02BNOZW2S	1 040 884
IME08-02BNSZT0S	1 040 878
IME08-02BNSZW2S	1 040 880
IME08-02BPOZT0S	1 040 874
IME08-02BPOZW2S	1 040 876
IME08-02BPSZT0S	1 040 870
IME08-02BPSZW2S	1 040 872

Sensing range
4 mm

Inductive sensor

- Short-circuit protection (pulsed)
- Robust brass housing, nickel-plated with fine thread M8 x 1 mm
- Enclosure rating IP 67
- Installation non-flush

Dimensional drawing

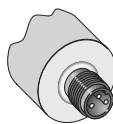


- 1 Connection
- 2 Display LED
- 3 Fastening nuts (2 x); width across 13, metal

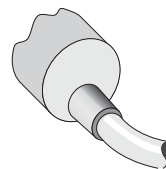


Connection type

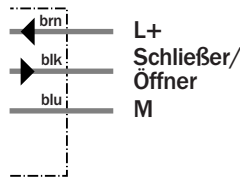
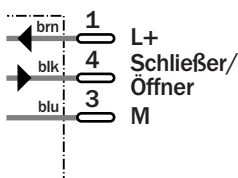
IME08-04NNOZT0S	IME08-04NNOZW2S
IME08-04NNSZT0S	IME08-04NNSZW2S
IME08-04NPOZT0S	IME08-04NPOZW2S
IME08-04NPSZT0S	IME08-04NPSZW2S



M8, 3-pin



3 x 0.14 mm²



Accessories
Connector, M8, 3-pin

Technical specifications		IME08-	04NN OZT0S	04NNO ZW2S	04NNS ZT0S	04NNS ZW2S	04NPO ZT0S	04NPO ZW2S	04NPS ZT0S	04NPS ZW2S		
Sensing range S_n	4 mm											
Electrical configuration	DC 3-wire											
Supply voltage V_s	DC 10 ... 30 V											
Ripple U_{pp}	≤ 10 %											
Voltage drop U_d	≤ 2 V ¹⁾											
Power consumption	≤ 10 mA ²⁾											
Continuous current I_a	≤ 200 mA											
Time delay before availability t_v	≤ 100 ms											
Hysteresis H, of s_r	5 ... 15 %											
Repeatability R	≤ 2 % (U_b and T_a constant) ³⁾											
Temperature drift, of s_r	± 10 %											
EMC	According to EN 60947-5-2											
Switching output	NPN											
	PNP											
Output function	Normally closed											
	Normally open											
Installation	Non-flush											
Connection type	Connector, M8, 3-pin											
	Cable, PVC, 2 m											
Enclosure rating	IP 67 ⁴⁾											
Max. switching frequency	500 Hz											
Dimensions	M8 x 1 ⁵⁾											
Short-circuit protection	✓ ⁶⁾											
Reverse polarity protection	✓											
Power-up pulse suppression	✓											
Shock/vibration stress	30 g, 11 ms/10 ... 55 Hz, 1 mm											
Ambient temperature T_a	-20 °C ... +65 °C											
Housing material	Brass nickel-plated, plastic											
Tightening torque	6 Nm											

¹⁾ at I_a max
²⁾ without load

³⁾ of s_r
⁴⁾ according to EN 60529

⁵⁾ Thread diameter x pitch (mm)
⁶⁾ (pulsed)

Reduction factor R_M

The following are reference values, which may vary from type to type:

St37 (Fe)	1
Stainless steel (V2A)	Approx. 0.8
Aluminum (solid)	Approx. 0.45
Copper (Cu)	Approx. 0.4

Ordering information

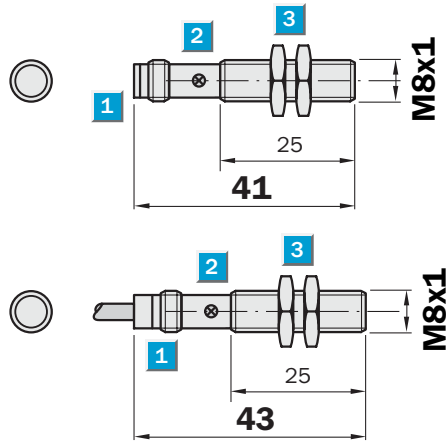
Type	Part Number
IME08-04NNOZT0S	1 040 898
IME08-04NNOZW2S	1 040 900
IME08-04NNSZT0S	1 040 894
IME08-04NNSZW2S	1 040 896
IME08-04NPOZT0S	1 040 890
IME08-04NPOZW2S	1 040 892
IME08-04NPSZT0S	1 040 886
IME08-04NPSZW2S	1 040 888

Sensing range
2 mm

Inductive sensor

- Short-circuit protection (pulsed)
- Robust brass housing, nickel-plated with fine thread M8 x 1 mm
- Enclosure rating IP 67
- Installation quasi-flush

Dimensional drawing

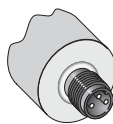


- 1 Connection
- 2 Display LED
- 3 Fastening nuts (2 x); width across 13, metal

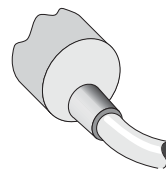


Connection type

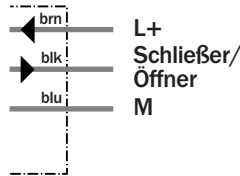
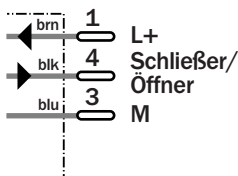
IME08-02BNOZTOK	IME08-02BNOZW2K
IME08-02BNSZTOK	IME08-02BNSZW2K
IME08-02BPOZTOK	IME08-02BPOZW2K
IME08-02BPSZTOK	IME08-02BPSZW2K



M8, 3-pin



3 x 0.14 mm²



Accessories
Connector, M8, 3-pin

Technical specifications		IME08-	02BNO ZTOK	02BNO ZW2K	02BNS ZTOK	02BNS ZW2K	02BPO ZTOK	02BPO ZW2K	02BPS ZTOK	02BPS ZW2K		
Sensing range S_n	2 mm											
Electrical configuration	DC 3-wire											
Supply voltage V_s	DC 10 ... 30 V											
Ripple U_{pp}	≤ 10 %											
Voltage drop U_d	≤ 2 V ¹⁾											
Power consumption	≤ 10 mA ²⁾											
Continuous current I_a	≤ 200 mA											
Time delay before availability t_v	≤ 100 ms											
Hysteresis H, of s_r	5 ... 15 %											
Repeatability R	≤ 2 % (U_b and T_a constant) ³⁾											
Temperature drift, of s_r	± 10 %											
EMC	According to EN 60947-5-2											
Switching output	NPN											
	PNP											
Output function	Normally closed											
	Normally open											
Installation	Quasi-flush											
Connection type	Connector, M8, 3-pin											
	Cable, PVC, 2 m											
Enclosure rating	IP 67 ⁴⁾											
Max. switching frequency	500 Hz											
Dimensions	M8 x 1 ⁵⁾											
Short-circuit protection	✓ ⁶⁾											
Reverse polarity protection	✓											
Power-up pulse suppression	✓											
Shock/vibration stress	30 g, 11 ms/10 ... 55 Hz, 1 mm											
Ambient temperature T_a	-20 °C ... +65 °C											
Housing material	Brass nickel-plated, plastic											
Tightening torque	6 Nm											

¹⁾ at I_a max
²⁾ without load

³⁾ of s_r
⁴⁾ according to EN 60529

⁵⁾ Thread diameter x pitch (mm)
⁶⁾ (pulsed)

Reduction factor R_M

The following are reference values, which may vary from type to type:

St37 (Fe)	1
Stainless steel (V2A)	Approx. 0.8
Aluminum (solid)	Approx. 0.45
Copper (Cu)	Approx. 0.4

Ordering information

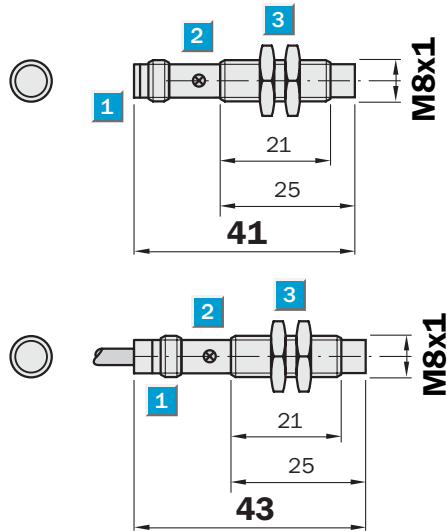
Type	Part Number
IME08-02BNOZTOK	1 040 881
IME08-02BNOZW2K	1 040 883
IME08-02BNSZTOK	1 040 877
IME08-02BNSZW2K	1 040 879
IME08-02BPOZTOK	1 040 873
IME08-02BPOZW2K	1 040 875
IME08-02BPSZTOK	1 040 869
IME08-02BPSZW2K	1 040 871

Sensing range
4 mm

Inductive sensor

- Short-circuit protection (pulsed)
- Robust brass housing, nickel-plated with fine thread M8 x 1 mm
- Enclosure rating IP 67
- Installation non-flush

Dimensional drawing

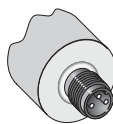


- 1 Connection
- 2 Display LED
- 3 Fastening nuts (2 x); width across 13, metal

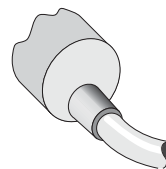


Connection type

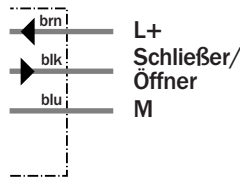
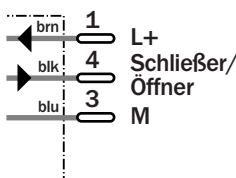
IME08-04NNOZTOK	IME08-04NNOZW2K
IME08-04NNSZTOK	IME08-04NNSZW2K
IME08-04NPOZTOK	IME08-04NPOZW2K
IME08-04NPSZTOK	IME08-04NPSZW2K



M8, 3-pin



3 x 0.14 mm²



Accessories
Connector, M8, 3-pin

Technical specifications		IME08-	04NN OZT0K	04NNO ZW2K	04NNS ZT0K	04NNS ZW2K	04NPO ZT0K	04NPO ZW2K	04NPS ZT0K	04NPS ZW2K		
Sensing range S_n	4 mm											
Electrical configuration	DC 3-wire											
Supply voltage V_s	DC 10 ... 30 V											
Ripple U_{pp}	≤ 10 %											
Voltage drop U_d	≤ 2 V ¹⁾											
Power consumption	≤ 10 mA ²⁾											
Continuous current I_a	≤ 200 mA											
Time delay before availability t_v	≤ 100 ms											
Hysteresis H, of s_r	5 ... 15 %											
Repeatability R	≤ 2 % (U_b and T_a constant) ³⁾											
Temperature drift, of s_r	± 10 %											
EMC	According to EN 60947-5-2											
Switching output	NPN											
	PNP											
Output function	Normally closed											
	Normally open											
Installation	Non-flush											
Connection type	Connector, M8, 3-pin											
	Cable, PVC, 2 m											
Enclosure rating	IP 67 ⁴⁾											
Max. switching frequency	500 Hz											
Dimensions	M8 x 1 ⁵⁾											
Short-circuit protection	✓ ⁶⁾											
Reverse polarity protection	✓											
Power-up pulse suppression	✓											
Shock/vibration stress	30 g, 11 ms/10 ... 55 Hz, 1 mm											
Ambient temperature T_a	-20 °C ... +65 °C											
Housing material	Brass nickel-plated, plastic											
Tightening torque	6 Nm											

¹⁾ at I_a max
²⁾ without load

³⁾ of s_r
⁴⁾ according to EN 60529

⁵⁾ Thread diameter x pitch (mm)
⁶⁾ (pulsed)

Reduction factor R_M

The following are reference values, which may vary from type to type:

St37 (Fe)	1
Stainless steel (V2A)	Approx. 0.8
Aluminum (solid)	Approx. 0.45
Copper (Cu)	Approx. 0.4

Ordering information

Type	Part Number
IME08-04NNOZT0K	1 040 897
IME08-04NNOZW2K	1 040 899
IME08-04NNSZT0K	1 040 893
IME08-04NNSZW2K	1 040 895
IME08-04NPOZT0K	1 040 889
IME08-04NPOZW2K	1 040 891
IME08-04NPSZT0K	1 040 885
IME08-04NPSZW2K	1 040 887