

RJ45 Jack, Waterproof

Panel mount

Specification

Data

100 Base T, 100 Base T and 1000 Base T Networks
 Cat 5E per TIA/EIA 568B
 Class D per ISO/EIC 11801

Category: Cat.5, Cat.5E, Cat.6

Material

Connector body: ABS/PBT/PA66 UL94V-0 1/8"
 Contact: Brass 4u"-20u" Gold plated

Temperature range: -20 — +80 C

Waterproof IP67

Durability 500 cycles

Flame test UL/CAS FT4

Thermal shock 5 cycles at -20 — +80 C / 5

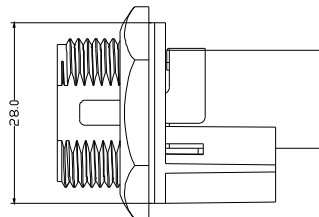
Salt Spray 48 hrs / 48

CGR RJ - 5E P FF J - S C 7 - 001

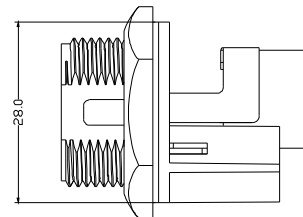
1 2 3 4 5 6 7 8 9

	Description	Details	Code
1	Connector	RJ45 or Shield RJ45	RJ or RJS
2	Category	Cat. 5E	5E
3	Connector Type	Panel Mount	P
4	Connector Gender	Jack Connector	FF
5	Assembly Style	110D or RJ45 Jack	B or J
6	Mating Style	Lock or Screw	L or S
7	Backs shell	Circular	C
8	Waterproof Rating	IP67	7
9	Version		001, 002

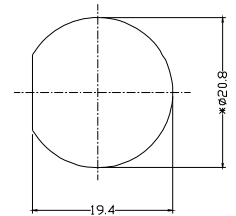
RJ45 Jack Panel Mount/Screw type



Version 001

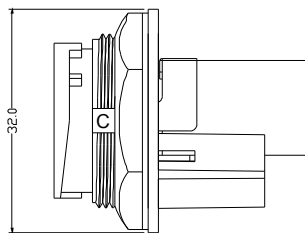


Version 002

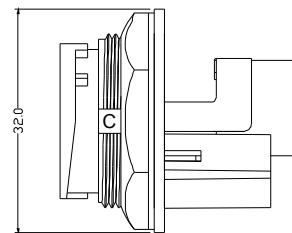


Panel Cut Off

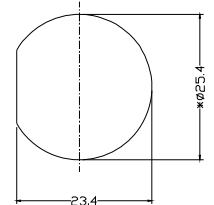
RJ45 Jack Panel Mount/Lock Bayonet



Version 001



Version 002



Panel Cut Off

