

HDMI Connectors

KLS1-290 HDMI Connector With Female Dip 90 19P

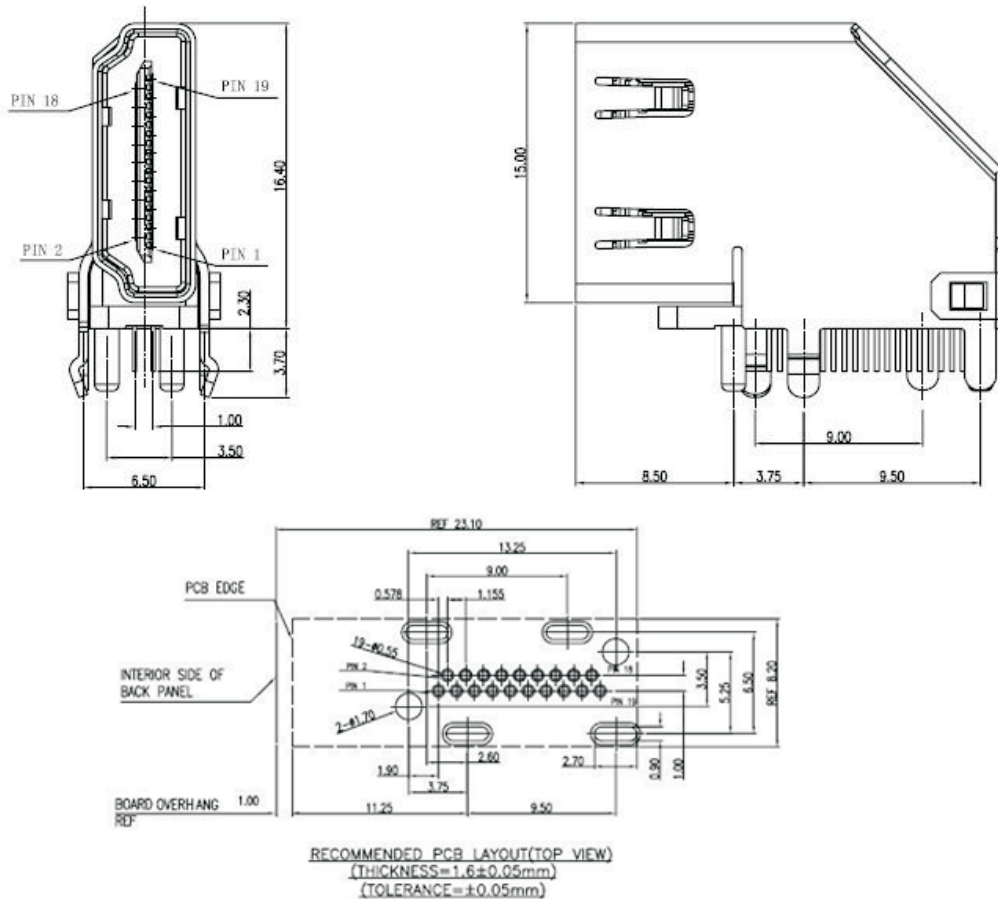
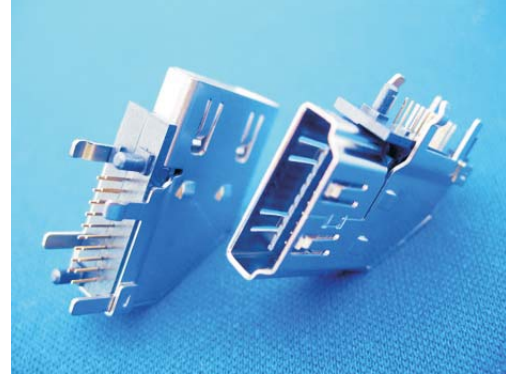


Material:

Housing : LCP, UL 94V-0
Cover Terminal: Phosphor Bronze
Shell: Brass/SPCC

Electrical:

Current Rating : 0.5A
Dielectric Withstanding Voltage : 40V AC Per Minute
Insulation Resistance : 100MΩ MIN
Contact Resistance : 30MΩ MAX
Operating Temperature: -25°C ~+85°C



ORDER INFORMATION

Product NO.: KLS1-290-1-N-30

