



中国·蓝波  
LANBOO

蓝波大电流开关

Pioneer of High-Current Switches

CCC CE RoHS Intertek ISO9001 多项专利

LB16-25Z 规格书

带线款金属信号灯

长寿命  
发光均匀  
带线150mm

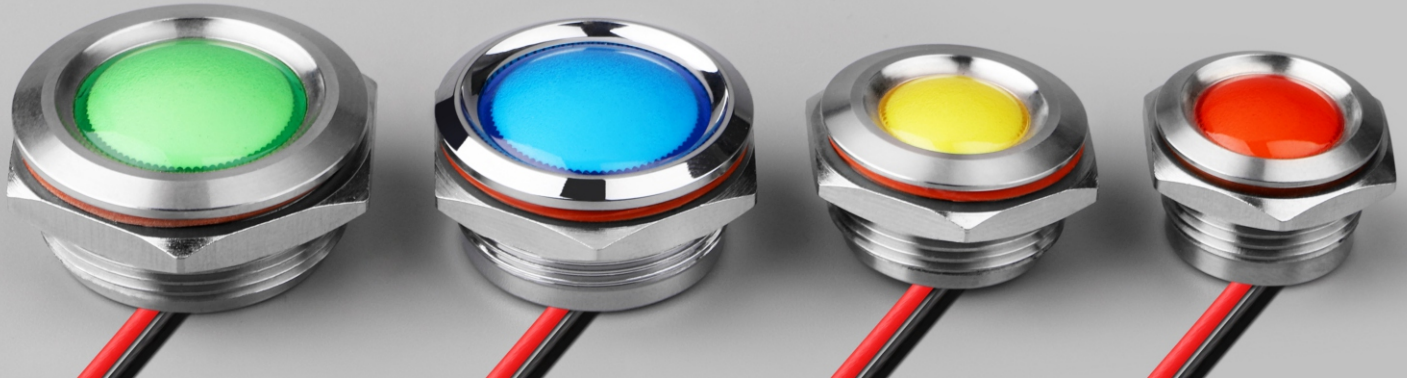


RED

BLUE

GREEN

YELLOW



镜面透光罩



发光面积大



防水IP68



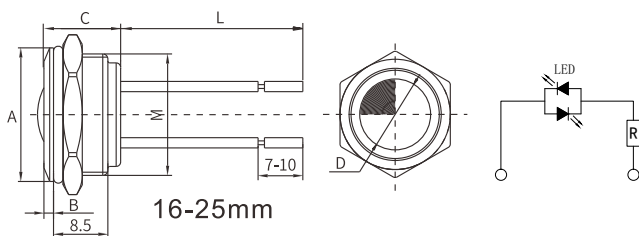
光线明亮柔和

型号说明/选型，写法举例：LB16Z-Q/CR9-24V/N/150(L)

对应编号	LB	●●	●	-	●	/	C	●	●●	/	●	/	●	L	
	1	2	3		4		5	6	7		8		9		10
1	LB	LANBOO 蓝波代码													
2	安装孔径	16、19、22、25mm													
3	系列号	Z—高端高寿命哑光指示灯、Z2—高亮经济型系列													
4	头部形状	Q—球头													
5	发光形状	C—整圆发光													
6	发光颜色	R—红色、G—绿色、B—蓝色，定制：Y—黄色、W—白色、双色三色（接线柱式可定制）													
7	LED 电压	5-24V、220V,定制：25-48V、110V,AC/DC 通用													
8	外壳材质	N—铜镀铬，可定制：S—不锈钢、A—铝氧化													
9	接线方式	150—默认150mm,可定制其它线长，可选螺丝脚款													
10	(L)	内部代码													

## 性能参数

开孔直径	对应孔径+0.2mm,例如: LB16Z为16.2mm
外壳	H57/59铜镀铬, 可定制: 304不锈钢 (RoHS)、6063铝氧化 (RoHS)
透光材料	PC(RoHS),V2级阻燃
螺母	H57/59铜镀镍, 可定制: 304不锈钢 (RoHS)
O型圈	硅胶 (RoHS)
底座	PBT(RoHS),V0级阻燃
导线	国标0.3mm <sup>2</sup> (RoHS)
安装面板厚度	≤5.5mm
拧紧力矩	0.8-1.2N.m
螺纹验证	将螺母锁紧至垫圈明显变形, 然后拆下, 如此循环 5 次, 无异常
接线形式	引线式/接线柱式
引脚反向拉力	引线式≥50N无脱落, 接线柱式≥80N无脱落, 1min
头部防脱顶牛	≥150N, 1min
工作环境温度	-40°C~+80°C,非真空状态、不结冰情况下
工作环境湿度	45~90%RH
贮存环境温度	包装完好情况下, -40°C~+55°C
贮存环境湿度	包装完好情况下, 45~90%RH
防护等级	防水IP68,防撞IK10(参考GB/T 20138)
绝缘电阻	≥1000MΩ
抗电强度(工频耐压)	3000VAC,50HZ,1min
触点最小适用负载	3V AC/DC,5mA(参考值, 取决于环境与负载情况)
耐振性	XYZ 三向, 60HZ,振幅 2mm
产品防跌落	头部竖直跌落 1 米, 3 次, 能正常工作
包装跌落	600mm 高度连续跌落 4 次, 产品无损坏
温升	按 GB/T14048.5 标准中 8.3.3.3 条款
盐雾试验	72h,3 个周期, (参考 GB/T 2423.18-2012)
低温试验	-40°C,96h,接触电阻≤200mΩ、按压力变化值≤30%,LED 正常
高温试验	80°C,96h,接触电阻≤200mΩ、按压力变化值≤30%,LED 正常
高低温冲击试验 (含LED灯加速老化试验)	-40~+85°C,85%RH,40min/循环, 50个循环, 接触电阻≤200mΩ、按压力变化值≤30%,LED正常
ESD静电	人体模式: 5KV,可定制8KV
LED额定电流	≤24V,≤20mA;>24V,≤10mA
LED灯珠类型	贴片无极双芯片 LED
LED降压方式	内置降压电阻
LED寿命	≥50000h(参考值)
产品认证	CCC CE RoHS(定制) REACH(定制)
专利号	ZL202030103095.6、ZL202030103168.1
质保	66 个月



### 外形尺寸

直径	A	B	C	D	L
16mm	∅17.8	1.5	12	∅11.5	150
19mm	∅20.9	1.5	12	∅11.5	150
22mm	∅24.8	2	13	∅18	150
25mm	∅27.9	2	13	∅18	150



硅胶密封圈  
Silicone seal ring

H57/59铜镀铬,可定制不锈钢  
H57/59 Copper Chrome plating, can be customized stainless steel

H57铜镀镍六角螺母  
Hexagon nut in nickel plating

PC透光罩  
PC diffuser, V2 Flame Retardant

PC柔光罩(V2阻燃)  
PC LightSphere V2 Flame Retardant

无极贴片LED灯珠  
Non-polar LED

PCB

PBT(RoHS),V0级阻燃  
Flame Retardant

0.15mm<sup>2</sup>国标铜芯线  
National Standard Copper corewire



中国·蓝波  
LANBOO

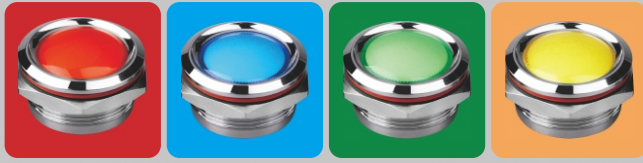
蓝波大电流开关

Pioneer of High-Current Switches

CCC CE RoHS Intertek ISO9001 多项专利

LB16-25Z Specification

with wires Metal indicator light



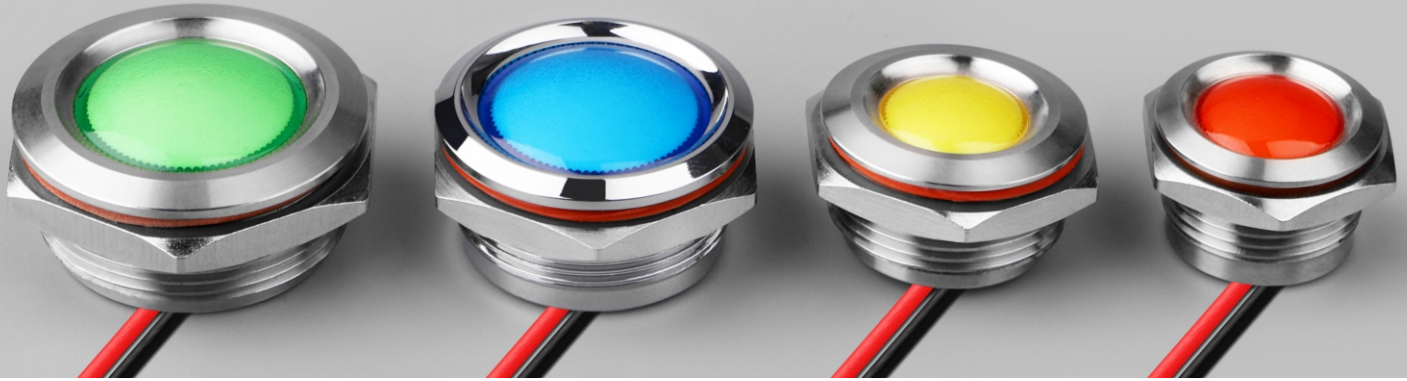
RED

BLUE

GREEN

YELLOW

Long life  
Luminous evenly  
With 150 mm



Mirror mask



Large luminous area



IP68



Light is bright and soft

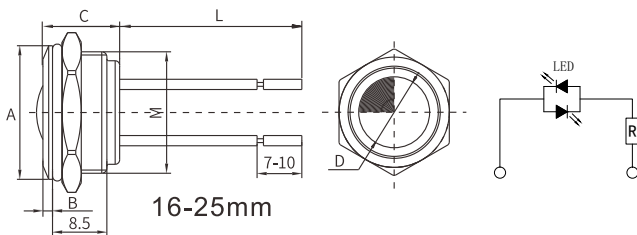
Model Description/Selection, Example: LB16Z-Q/CR9-24V/N/I50(L)

The Corresponding Number	LB	●●	●	—	●	/	C	●	●●	/	●	/	●	L
	1	2	3		4		5	6	7		8		9	10
1	LB	LANBOO												
2	Install Diameter	16、19、22、25mm												
3	Series No.	Z - High-end matte indicator light with high life, Z2 - High-gloss economic series												
4	Head Shape	Q—Ball head												
5	Luminous Shape	C—Whole surface glow												
6	LED Color	R -Red, G -Green, B -Blue, customized: Y -Yellow, W -White, two colors and three colors (terminal post type can be customized)												
7	LED Voltage	5-24V、220V, customized: 25-48V、110V, AC/DC general purpose												
8	Shell Material	N -Copper chrome plating, Customizable: S -Stainless steel, A -Aluminum Oxidation												
9	Connection Mode	150 - Default 150mm, other line lengths can be customized, optional screw foot												
10	(L)	Internal Code												



## The performance parameters

Hole Diameter	Corresponding aperture +0.2mm, for example: LB16Z is 16.2mm
Shell	H57/59 Copper chrome, customizable: 304 stainless steel (RoHS), 6063 Aluminum oxide (RoHS)
Pervious To Light Material	PC (RoHS), V2 flame retardant
Nut	H57/59 Nickel copper plating, customizable: 304 stainless steel (RoHS)
O-Ring	Silica gel (RoHS)
Base Seat	PBT (RoHS), Grade V0 flame retardant
Wires	GB:0.3mm <sup>2</sup> (RoHS)
Mounting Panel Thickness	≤5.5mm
Nut Tightening torque	0.8-1.2N.m
Thread Verification	Lock the nut until the washer is visibly deformed, then remove the nut. Repeat 5 times without exception
Connection Mode	Wiring
Pin Reverse Tension	Lead =50N without shedding, terminal =80N without shedding, 1min
Head Anti-off Strength	≥150N, 1min
Working Environment Temperature	-40°C ~ +80°C, non-vacuum state, non-freezing condition
Working Environment Humidity	45~90%RH
Storage Ambient Temperature	Packing in good condition, -40°C~+55°C
Storage Ambient Humidity	Packing in good condition, 45~90%RH
Protection Level	IP68, IK10 (refer to GB/T 20138)
Insulation Resistance	≥1000MΩ
Dielectric Strength	3000VAC,50HZ,1min
Min. Applicable Load For Contact	3V AC/DC,5mA(Reference value, depending on the environment and load)
Resistance To Vibration	XYZ, 60HZ, The amplitude 2mm
Product Fall-Proof	Head vertical drop 1 meter, 3 times, can work normally
Packaging Fall-Proof	600mm height continuous drop for 4 times, no damage to the product
Temperature Rise	According to clause 8.3.3.3 in GB/T14048.5 standard
Salt Spray Test	72H, 3 cycles (refer to GB/T 2423.18-2012)
Low Temperature Test	-40°C, 96h, Contact resistance ≤200mΩ, Change in pressure ≤30%, LED Normal
High Temperature Test	80°C, 96h, Contact resistance ≤200mΩ, Change in pressure ≤30%, LED Normal
High And Low Temperature Impact Test	-40~+85°C, 85%RH, 40min/Circulation, 50 Circulation, Contact resistance ≤200mΩ, Change in pressure ≤30% LED Normal
ESD Electrostatic	Body mode: 5KV, customizable 8KV
LED Rated Current	≤24V, ≤20mA; >24V, ≤10mA
LED Type	Patch nonpolar twin chip LED
LED Resistance	Built-in Resistance
LED Life	≥50000h (Reference value)
Certificate	CE RoHS REACH
Patent No.	ZL202030103095.6、ZL202030103168.1
Quality Assurance	66 Months



Diameter	A	B	C	D	L
16mm	∅17.8	1.5	12	∅11.5	150
19mm	∅20.9	1.5	12	∅11.5	150
22mm	∅24.8	2	13	∅18	150
25mm	∅27.9	2	13	∅18	150

Outline Dimension