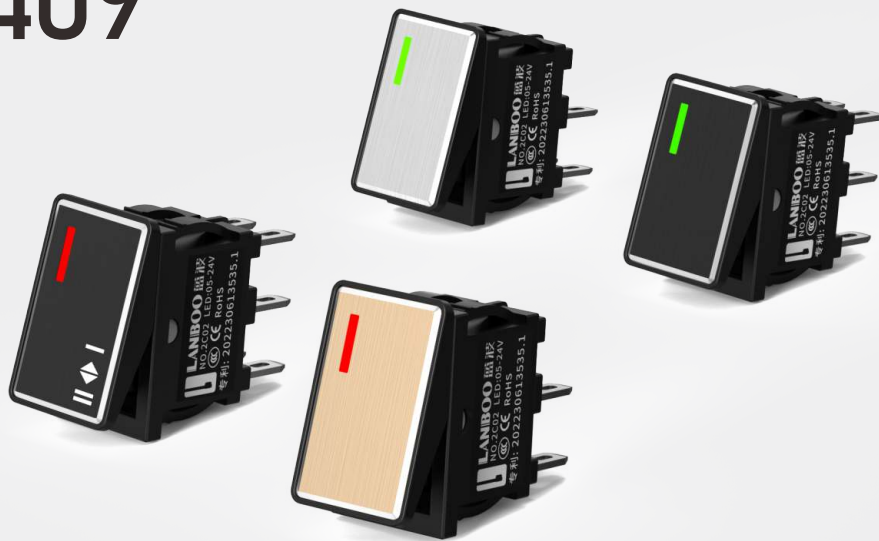
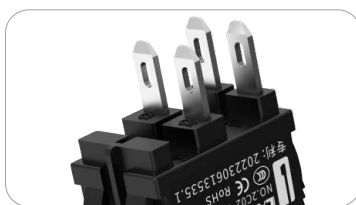


LBCX1409

迷你船型开关
二档/三档



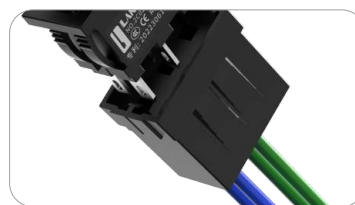
铝氧化面板



镀银引脚



触点:银氧化锡AgSnO2



专用接插件

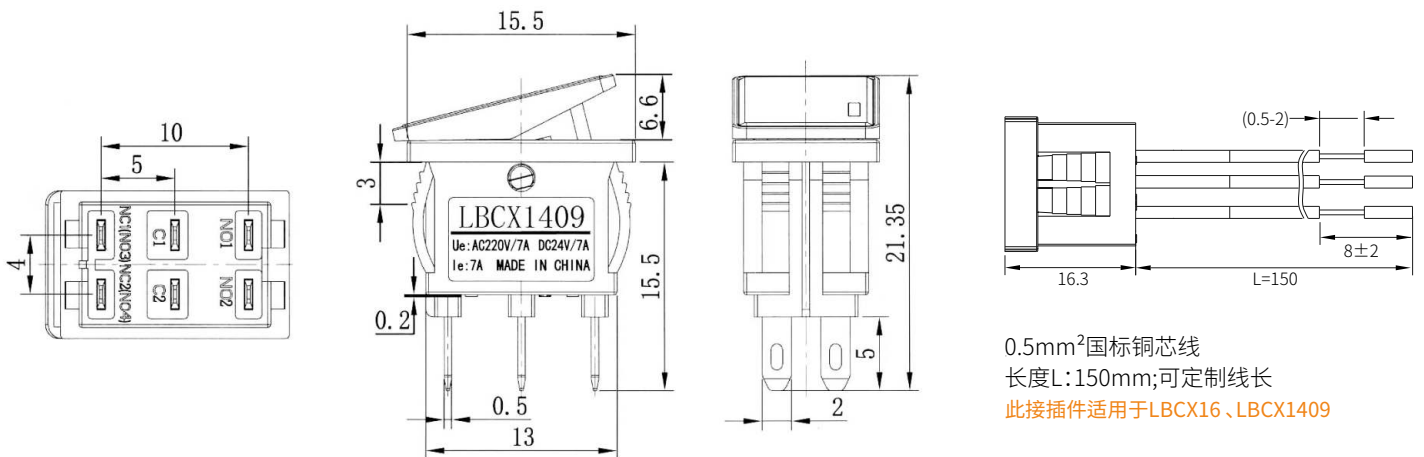
型号说明/选型, 写法举例: LBCX1409-Y403/R5-24V(L)

| 对应编号 | | LB | CX | ●● | — | ● | ●● | ● | / | ● | ● | L |
|------|--------|---|----|----|---|---|----|---|---|---|---|---|
| | | 1 | 2 | 3 | | 4 | 5 | 6 | | 7 | 8 | 9 |
| 1 | LB | LANBOO | | | | | | | | | | |
| 2 | 船型开关代码 | CX | | | | | | | | | | |
| 3 | 安装孔径 | 1409—14*9mm, 代替KCD1船型开关 | | | | | | | | | | |
| 4 | 翘板颜色 | J—金色、Y—银色、H—黑色 | | | | | | | | | | |
| 5 | 开关组合 | 20—2NO、22—2NO2NC、40—4NO | | | | | | | | | | |
| 6 | 档位 | 2—2档、3—3档 | | | | | | | | | | |
| 7 | 发光颜色 | R—红色、G—绿色, 定制: B—蓝色、Y—黄色、W—白色 | | | | | | | | | | |
| 8 | 输入电压 | 5-24V, 220V, 定制: 3-8V、25-48V、110V, AC/DC 通用 | | | | | | | | | | |
| 9 | (L) | 内部代码 | | | | | | | | | | |

性能参数

| | |
|------|-------------------|
| 开孔直径 | 14.2*8.8mm |
| 面板 | 铝氧化(RoHS) |
| 底座 | PA66+GF20(RoHS) |
| 翘板 | PC (RoHS), V2级阻燃 |
| 透光材料 | PC(RoHS), V2级阻燃 |
| 触点 | 银氧化锡AgSnO2 (RoHS) |
| 引脚 | 镀银 (RoHS) |

| | |
|--------------------------|--|
| 安装面板厚度 | ≤2.5mm |
| 按压力 | 7±0.8N |
| 接线形式 | 引脚式, 可配接插件 |
| 耐焊性 | ≤380°C (25~50W电烙铁) ≤2秒 |
| 插片可焊性试验 | 各引脚分别焊接1mm ² 电线, 80N正向拉力后, 无脱落 |
| 引脚反向推力 | ≥50N无位移, 1min |
| 头部防脱顶牛 | ≥150N, 1min |
| 工作环境温度 | -40°C~+80°C, 非真空状态、不结冰情况下 |
| 工作环境湿度 | 45~90%RH |
| 贮存环境温度 | 包装完好情况下, -40°C~+55°C |
| 贮存环境湿度 | 包装完好情况下, 45~90%RH |
| 约定发热电流 | Ith: 10A, 250VAC |
| 电阻性负载 | AC-15: 110V/220V:7A; DC-13: 12V/24V/36V:7A |
| 电感性负载 | AC-15: 110V/220V:3A; DC-13: 110V:3A |
| 接触电阻 | ≤50mΩ |
| 绝缘电阻 | ≥1000MΩ |
| 抗电强度 (工频耐压) | 2000VAC, 50HZ, 1min |
| 触点最小适用负载 | 3V AC/DC, 5mA (参考值, 取决于环境与负载情况) |
| 耐振性 | XYZ三向, 60HZ, 振幅2mm |
| 产品防跌落 | 头部竖直跌落1米, 3次, 能正常工作 |
| 包装跌落 | 600mm高度连续跌落4次, 产品无损坏 |
| 耐冲击性 | 各部位能承受冲击力10g, 能正常工作 |
| 温升试验 | 按GB/T14048.5标准中8.3.3.3条款 |
| 盐雾试验 | 72h, 3个周期, (参考GB/T 2423.18-2012) |
| 低温试验 | -40°C, 96h, 接触电阻≤200mΩ、按压力变化值≤30%, LED正常 |
| 高温试验 | 80°C, 96h, 接触电阻≤200mΩ、按压力变化值≤30%, LED正常 |
| 高低温冲击试验 (含LED灯加速老化试验) | -40~+85°C, 85%RH, 40min/循环, 50个循环, 接触电阻≤200mΩ、按压力变化值≤30%, LED正常 |
| 电气寿命 | 阻性负载: AC220V/7A、DC36V/7A: 2万次; AC220V/0.5A、DC36V/0.5A: 5万次 (参考GB/T14048.5) |
| 机械寿命 | 20万次 (参考GB/T14048.5) |
| ESD静电 | 人体模式: 2KV, 可定制8KV |
| LED额定电流 | ≤24V, ≤20mA; >24V, ≤10mA |
| LED灯珠类型 | 贴片无极双芯片LED |
| LED降压方式 | 内置降压电阻 |
| LED寿命 | ≥50000h (参考值) |
| 产品认证 | CCC CE RoHS (定制) REACH (定制) |
| 专利号 | 202230613535.1 |
| 质保 | 66个月 |





中国·蓝波
LANBOO

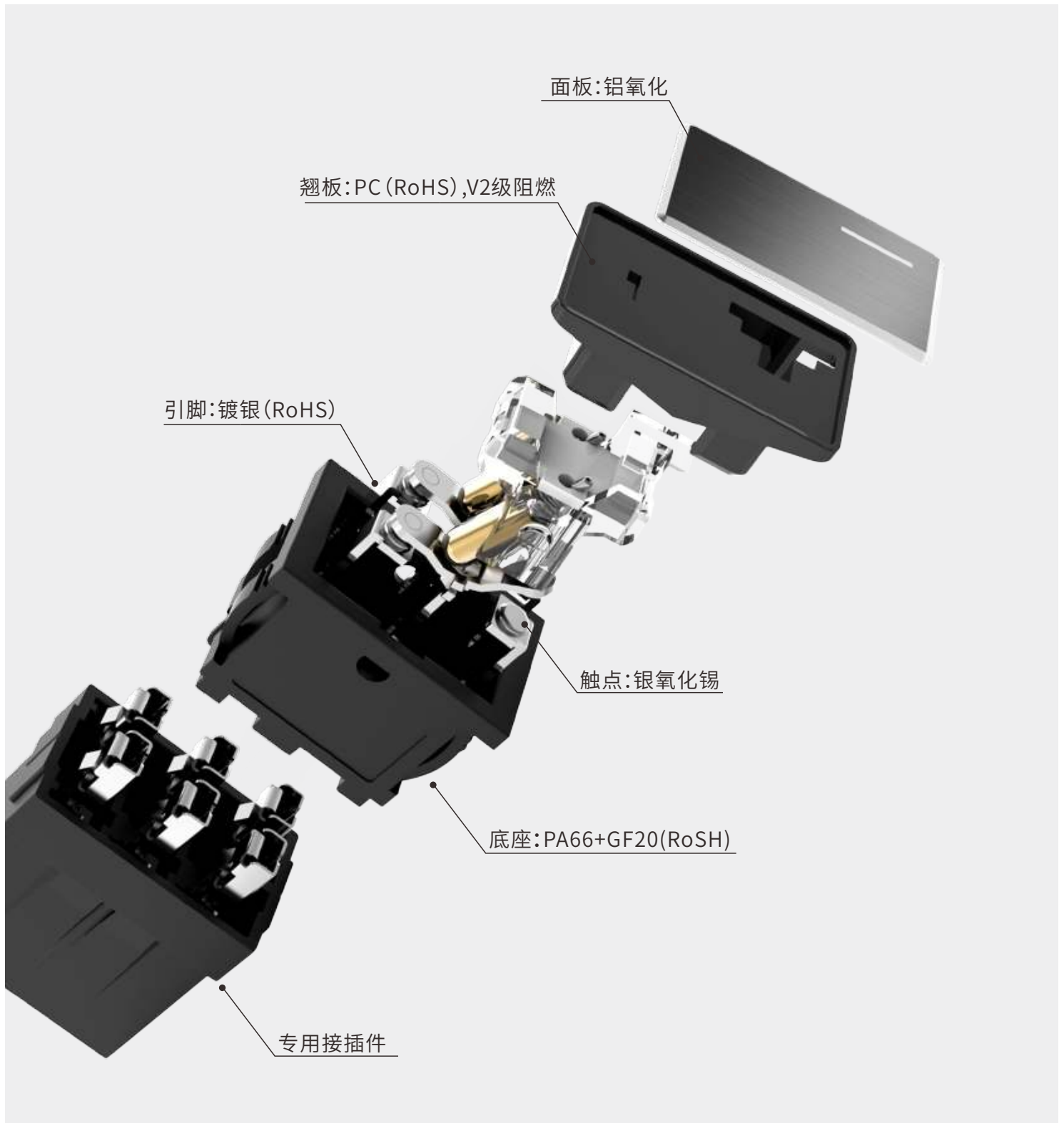
蓝波大电流开关

Pioneer of High-Current Switches

CE RoHS Intertek ISO9001 多项专利

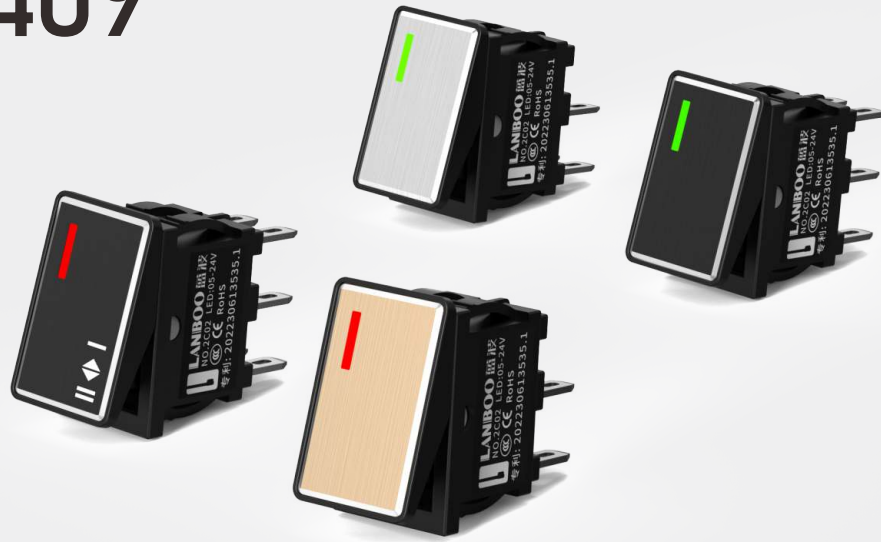
LBCX1409 规格书

迷你船型开关

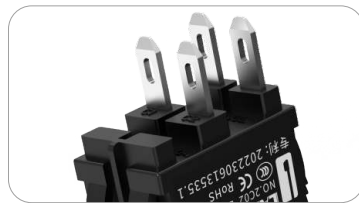


LBCX1409

Mini Rocker Switch
2 gear/3 gear



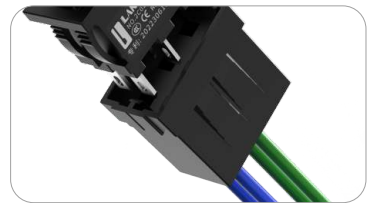
Aluminum oxidation



Silver plated pin



Contacts: Silver tin oxide



Connector

Model Description/Selection, Example:LBCX1409-Y403/R5-24V(L)

| The Corresponding Number | LB | CX | ●● | — | ● | ●● | ● | / | ● | ● | L |
|--------------------------|--------------------|---|----|---|---|----|---|---|---|---|---|
| | 1 | 2 | 3 | | 4 | 5 | 6 | | 7 | 8 | 9 |
| 1 | LB | LANBOO | | | | | | | | | |
| 2 | Series No. | CX | | | | | | | | | |
| 3 | Install Diameter | 1409—14*9mm | | | | | | | | | |
| 4 | Warping color | J—Gold、Y—Silver、H—Black | | | | | | | | | |
| 5 | Switch Combination | 20—2NO、22—2NO2NC、40—4NO4NC | | | | | | | | | |
| 6 | Gear | 2—2 gear、3—3 gear | | | | | | | | | |
| 7 | LED Color | R-Red、G-Green、Custom: B-Blue、Y-Yellow、W-White | | | | | | | | | |
| 8 | LED Voltage | 5-24V、220V、Customized: 3-8V、25-48V、110V、AC/DC General Purpose | | | | | | | | | |
| 9 | (L) | Internal Code | | | | | | | | | |

The performance parameters

| | |
|-----------------------|--------------------------------|
| Hole Diameter | 14.2*8.8mm |
| Panel | Aluminum oxidation |
| Base | PA66+GF20(RoHS) |
| Rocker | PC(RoHS), V2 flame retardant |
| Transparent materials | PC(RoHS), V2 flame retardant |
| Contact | Silver tin oxide AgSnO2 (RoHS) |
| Pin | Silver plating (RoHS) |

| | |
|---|--|
| Installation panel thickness | ≤2.5mm |
| Under pressure | 7±0.8N |
| Connection Mode | Pins, Special connector can be selected |
| Welding resistance | ≤380°C (25 ~ 50W soldering iron) ≤2 seconds |
| Insert weldability test | Each pin is welded with 1mm ² wire, and does not fall off after 80N positive pulling force |
| Pin reverse thrust | ≥50N No displacement, 1 minute |
| The head should not fall off | ≥150N, 1min |
| Ambient Temperature | -40°C~+80°C, In non vacuum and non icing conditions |
| Working ambient humidity | 45~90%RH |
| Storage environment temperature | Under intact packaging, -40°C~+55°C |
| Storage environment humidity | Under intact packaging, 45~90%RH |
| Conventional thermal current | Ith: 10A, 250VAC |
| Resistance load | AC-15: 110V/220V:7A; DC-13: 12V/24V/36V:7A |
| Inductance Load | AC-15: 110V/220V:3A; DC-13: 110V:3A |
| Contact resistance | ≤50mΩ |
| Insulation resistance | ≥1000MΩ |
| Dielectric strength (power frequency withstand voltage) | 2000VAC, 50HZ, 1min |
| Minimum applicable load of contacts | 3V AC/DC, 5mA (Reference value, depending on environment and load conditions) |
| Resistance to vibration | XYZ three way, 60Hz, amplitude 2mm |
| Product drop prevention | Head vertical drop of 1 meter, 3 times, able to work normally |
| Packaging drop | 4 consecutive drops from a height of 600mm, with no damage to the product |
| Impact resistance | Each part can withstand an impact force of 10g and work normally |
| Temperature rise test | According to clause 8.3.3.3 of GB/T14048.5 standard |
| Salt spray test | 72 hours, 3 cycles, (refer to GB/T 2423.18-2012) |
| Low Temperature | -40 °C, 96h, contact resistance ≤ 200m Ω, pressure change value ≤ 30%, LED normal |
| High Temperature Test | 80 °C, 96h, contact resistance ≤ 200m Ω, pressure change value ≤ 30%, LED normal |
| High and low temperature impact test (including LED lamp accelerated aging test) | -40~+85 °C, 85% RH, 40min/cycle, 50 cycles, contact resistance ≤ 200m Ω, pressure change value ≤ 30%, LED normal |
| Electrical life | Resistive load: AC220V/7A, DC36V/7A: 20000 times; AC220V/0.5A, DC36V/0.5A: 50000 times (refer to GB/T14048.5) |
| Mechanical life | 200000 times, (refer to GB/T14048.5) |
| ESD static electricity | Human mode: 2KV, customizable for 8KV |
| LED rated current | ≤24V, ≤20mA; >24V, ≤10mA |
| LED bead type | SMT Poleless Dual Chip LED |
| LED voltage reduction method | Built in step-down resistor |
| LED Life | ≥50000h (reference value) |
| Product Certification | CCC CE RoHS (customized) REACH (customized) |
| Patent number | 202230613535.1 |
| Quality Assurance | 66 Months |

